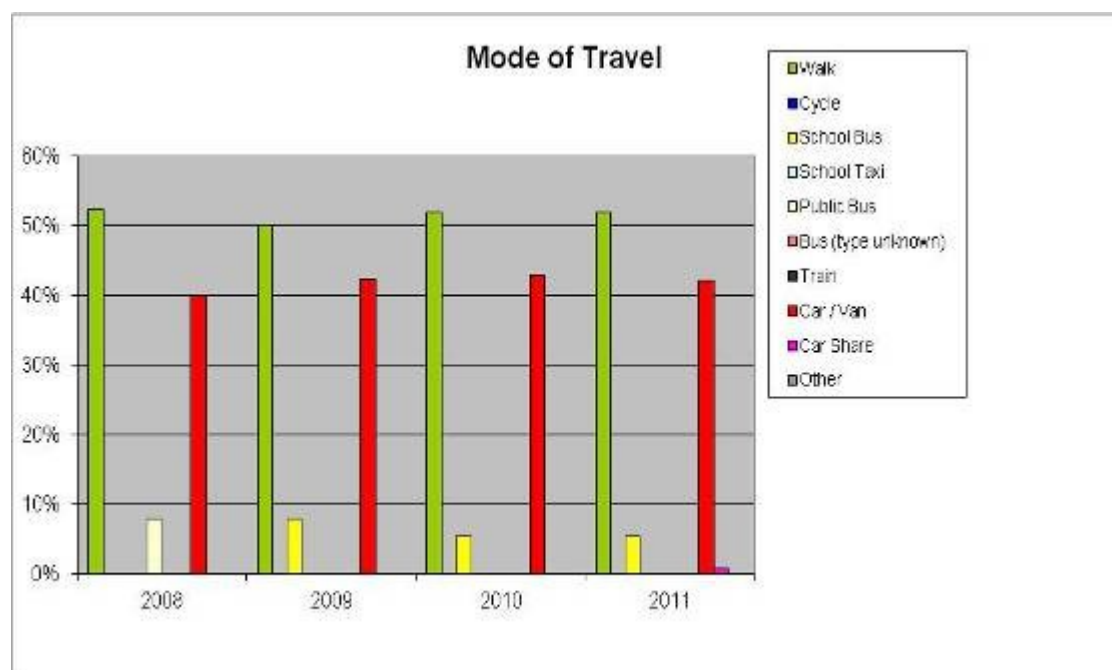


To determine school travel patterns, understand the reasons for current travel choices and identify travel preferences, the pupils, parents and staff have all been consulted through questionnaires and surveys.

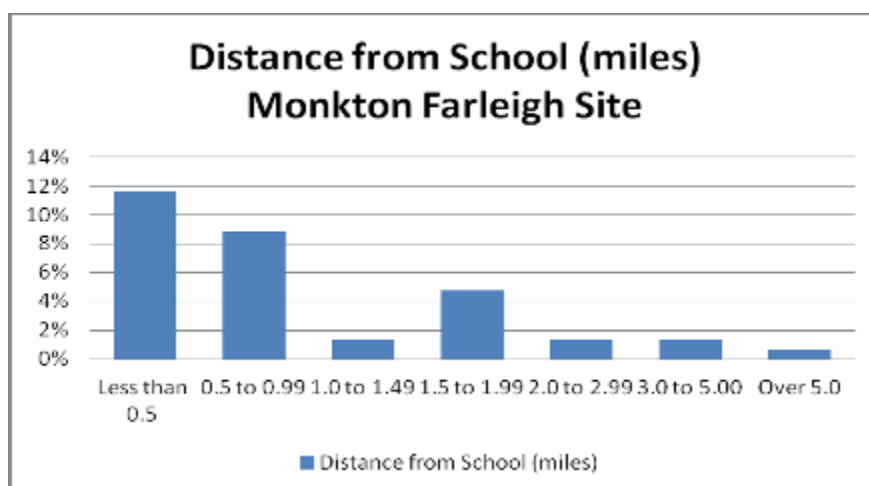
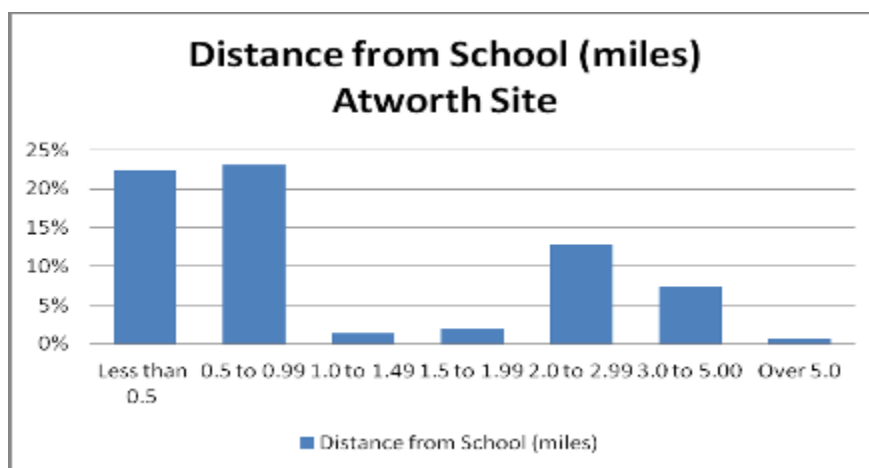
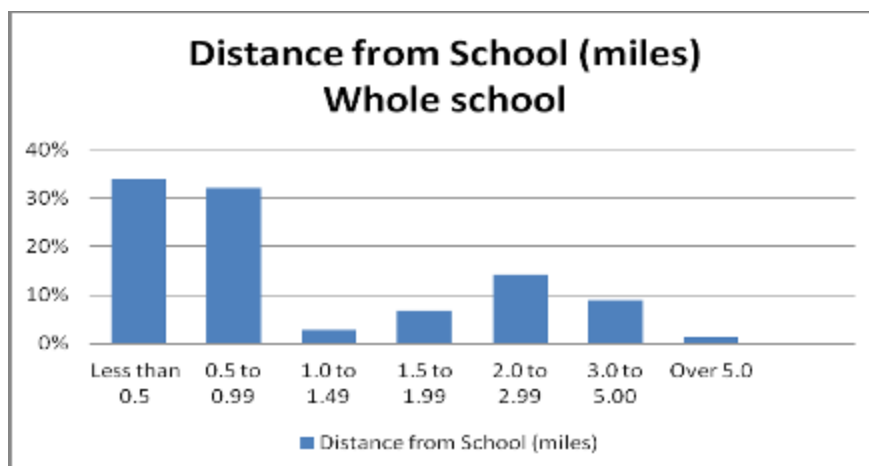
1.1 Historical data

Based on past hands-up tallies, parental surveys and school census data for each year, the following table provides historical mode of travel data for the school. Where there has been more than one survey in a year, an average has been taken.

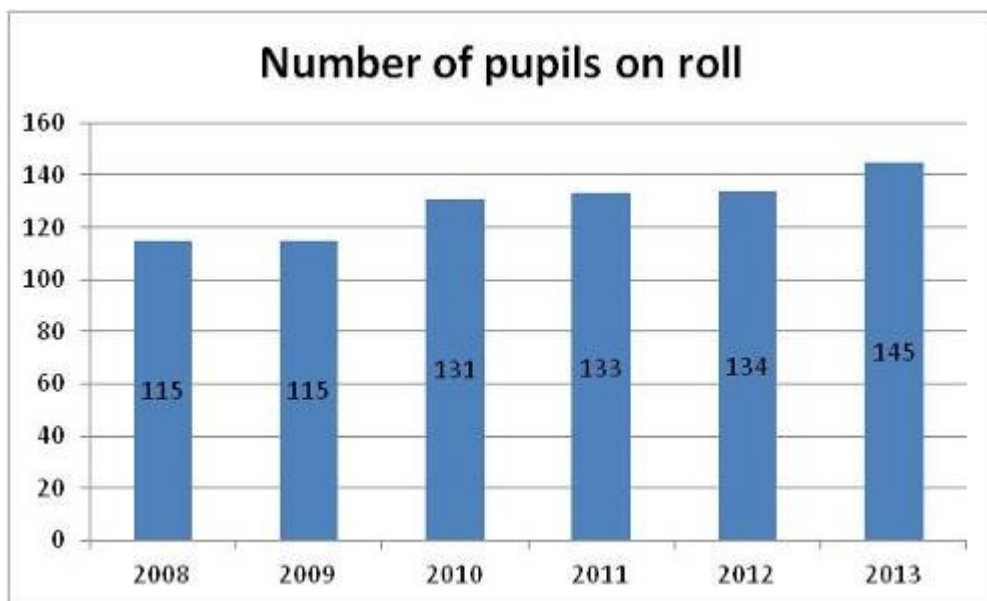
Mode Of Travel	2008	2009	2010	2011
Walk	52%	50%	52%	52%
Cycle	0%	0%	0%	0%
School Bus	0%	8%	5%	5%
School Taxi	0%	0%	0%	0%
Public Bus	8%	0%	0%	0%
Bus (type unknown)	0%	0%	0%	0%
Train	0%	0%	0%	0%
Car / Van	40%	42%	43%	42%
Car Share	0%	0%	0%	1%
Other	0%	0%	0%	0%



The three charts below use 2013 data to show pupil distances from the site they attend.



This chart shows the change in numbers on roll over the last six academic years.



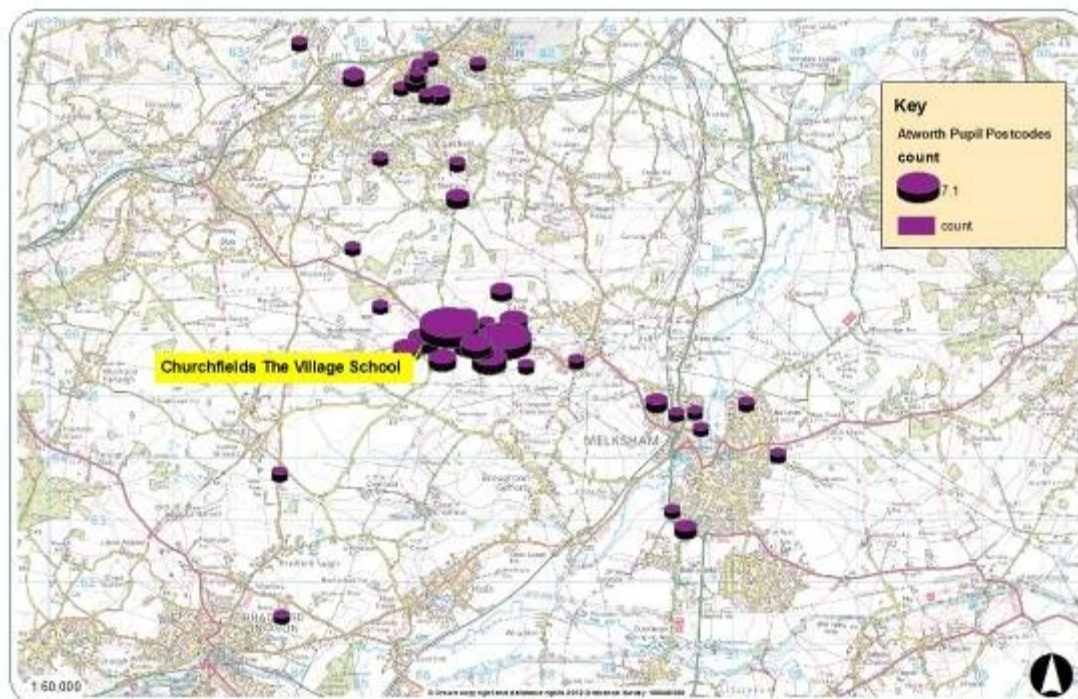
If there has been any significant change since the school travel plan please add comments here

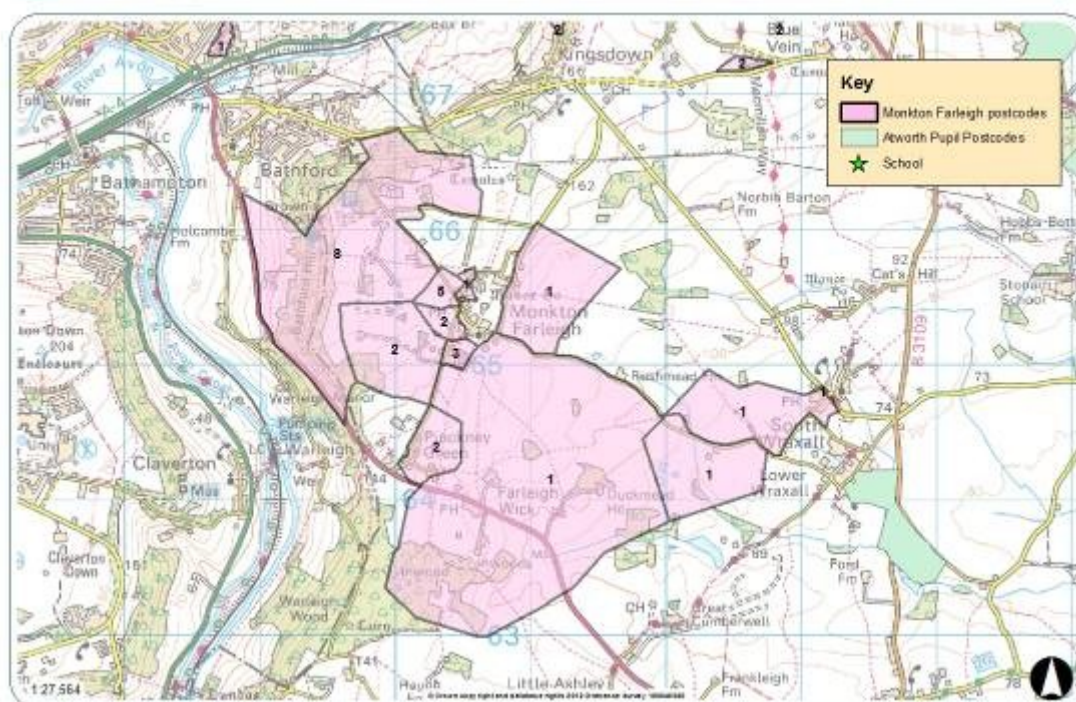
1.2 Pupil postcode map

Using the postcode data from the current roll, maps have been created to show the distribution of the pupils in relation to the school sites. The larger the pie chart, the more pupils live at that postcode.



Churchfields the Village School
Atworth Base - full catchment





If there has been any significant change of pupil distribution please comment here

1.3 Pupil survey (April 2013)

This section needs a brief explanation on how the survey was conducted – try to include details of how the mode of travel data was collected and how the in-class discussion was conducted.

The following table and chart shows the findings from the pupil survey.

Mode of travel	No.	Current Mode (%)	No.	Preferred mode (%)
Walk	55	35%	15	44%
Cycle	7	4%	11	32%
Scooter	14	9%	5	15%
Park and Stride	5	3%	0	
School Bus	2	1%	0	
School Taxi	0		0	
Public Bus	0		0	
Bus (type unknown)	0		1	3%
Train	0		1	3%
Car / Van	70	44%	1	3%
Car Share	5	3%	0	
Other	0		0	
TOTAL	158	100%	34	100%

As part of the in-class discussions, the pupils discussed the following questions:

What prevents you from walking, cycling and using the bus to get to school?

- Too far to walk
- Too much traffic for us to cycle in the village
- Parents working
- Takes too long
- No-one lives near where I live
- Narrow pavements
- Not enough time
- Brother can't ride a bike
- Bus – might miss it, easier not to, might lose pass
- No bus

What changes would help solve these problems to encourage you to walk, cycle or use the bus to come to school?

- Slower speed limits through the village
- Make school later
- More bus stops
- Wider pavements
- School scooters
- Cycling bus (like walking bus)

Why would you like to walk, cycle or travel by bus to school?

- Spend time with parents and friends
- Fun
- Less pollution
- Keeps you fit
- You can get further away from annoying brother when you walk!

You need to discuss the above findings in relation to your school, and in relation to previous surveys. Are there any surprises? Have any of the barriers been identified in the past? Are the suggested solutions practical? Have any of these solutions already been carried out? A couple of paragraphs will be adequate.

1.4 Parental Questionnaire (April 2013)

Here you will need to give some basic details of how the questionnaire was conducted, how many parents it was given to, response rate (actual number and percentage) and when it was conducted.

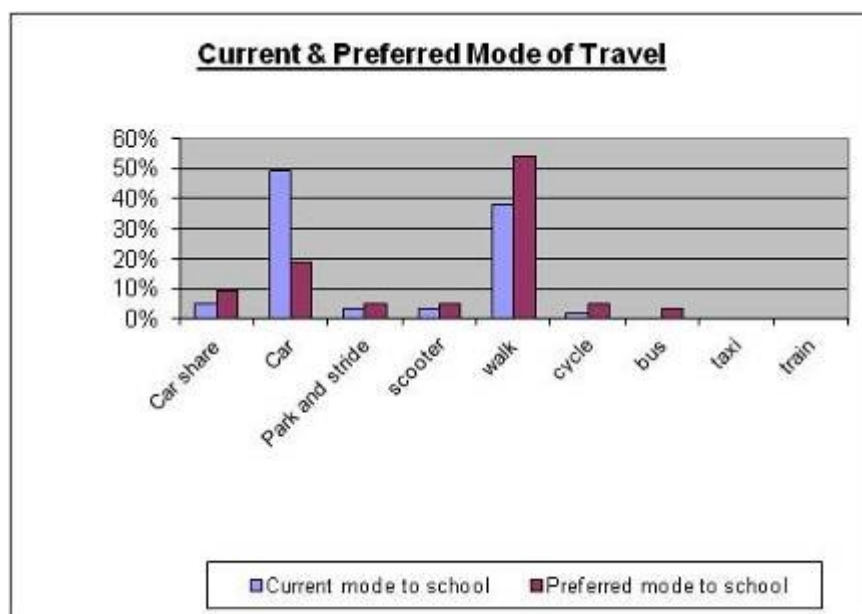
Parents were asked how their children currently travel to and from school as well as how they would prefer to; the results are as follows:

Mode of travel to school	Number of families	%
--------------------------	--------------------	---

School Travel Plan Update Results Section

Car share	3	5%
Car	31	49%
Park and stride	2	3%
scooter	2	3%
walk	24	38%
cycle	1	2%
bus	0	0%
taxi	0	0%
train	0	0%
Total	63	100%

Preferred mode of travel	Number of families	%
Car share	6	10%
Car	12	19%
Park and stride	3	5%
scooter	3	5%
walk	34	54%
cycle	3	5%
bus	2	3%
taxi	0	0%
train	0	0%
Total	63	100%



You will need to comment on the findings – how does this compare with the finding of the pupil in-class survey? Do more children wish to walk / cycle than currently do? Is this a feasible option at the school – if more children wish to cycle, is it safe to do so? Do the school have cycle parking? etc

Parents were asked to give up to three reasons for their current mode of travel. The most frequently cited reasons were:

- It is the most appropriate for the distance (34 families)
- There is no reasonable alternative (17 families)

- It fits in with a longer journey you are making (16 families)

Parents were asked to state what would encourage them to send their child to school by their preferred mode of travel. Among the 38 car driving families, the most commonly cited factors were:

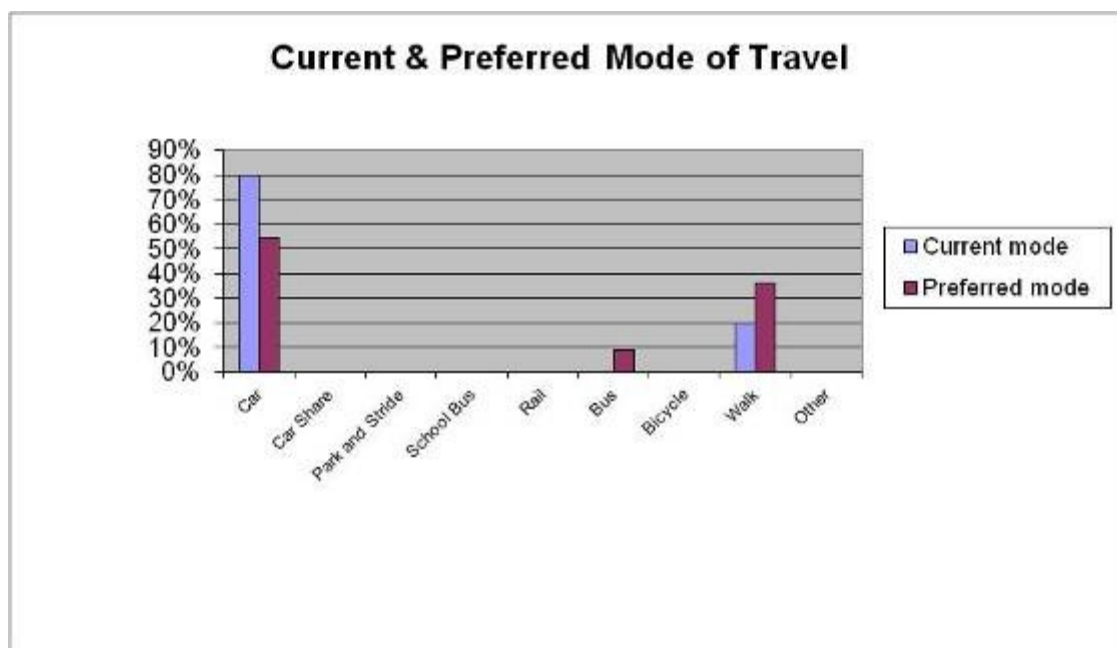
- Less/slower traffic near the school/on the journey (12 families)
- Sharing the journey with other parents – car share, walking bus (7 families)
- Better maintained footpaths (5 families)
- Road Safety training (5 families)

Have any of the suggestions above been tried in the past? Could any of them be possible actions that the school could take forward? If yes, these could be included in your action plan.

1.5 Staff Questionnaire

In April 2013, a school travel questionnaire was issued to all members of staff. The questionnaire looked specifically at how staff currently travel to school and how they would prefer to travel. The questionnaire also tried to identify barriers to using sustainable transport and some possible solutions.

Mode of travel	No.	Current mode (%)	No.	Preferred mode (%)
Car	12	80%	6	55%
Car Share	0		0	
Park and Stride	0		0	
School Bus	0		0	
Rail	0		0	
Bus	0		1	9%
Bicycle	0		0	
Walk	3	20%	4	36%
Other	0		0	
TOTAL	15	100%	11	100%



The most popular reasons for staff not using sustainable modes of travel to get to school were:

- Lack of suitable public transport (routes, timings, frequency)
- Other commitments
- Convenience
- Things to carry
- Split site school
- Differing timetable (therefore difficult to car-share)
- Distance and time

The most popular changes / incentives to encourage staff to travel to school by sustainable transport were:

- Improved public transport provision
- Slower traffic speeds
- Retirement!
- Safer routes
- Better parking provision (for park and stride).

1.6 Additional Surveys

If the school has conducted any other surveys, please place the findings here. Other surveys could include traffic counts and canvassing of local residents. If not applicable, please delete section 3.6.